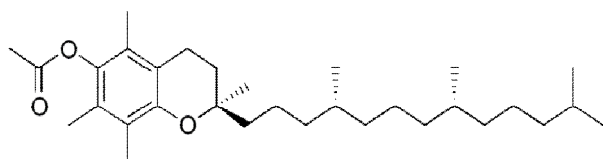


Technical Data Sheet

Product Name: Stamin-E™

Chemical Structure:



Molecular Formula : C₃₁H₅₂O₃

Chemical Name : Tocopherol Acetate

CAS No : 7695-91-2

EINECS : 231-710-0

Characteristics:

Description : Pale yellow (or) Slightly greenish-yellow viscous liquid

Solubility : Insoluble in water, freely soluble in Diethyl ether.

Identifications

a) IR : Should pass

b) Light absorption by UV : Should comply at minimum at about 254 nm and maximum at about
284 nm

Refractive index at 20°C : Should be between 1.494 to 1.498

Acidity (0.1N NaOH) : Not more than 1 ml/g

Version No: 01/19.07.2017

Rev.No: 00/18.07.2019

Vinner Labs P Ltd
507, Solitaire, Maharshi Marg
Silpa Park, Kondapur
Hyderaad-500084, India
Contact+ 91-40-27115585

Heavy metals	: Not more than 10 ppm
Sulphated ash	: Not more than 0.1%
Tocopherol acetate	: Between 960 and 1020 IU/g
Optical rotation	: -0.01° to $+0.01^{\circ}$
Specific gravity	: 0.952 to 0.966 g/cm ³
Assay	: Not less than 96.0% and not more than 102.0%

Version No: 01/19.07.2017

Rev.No: 00/18.07.2019

Vinner Labs P Ltd
507, Solitaire, Maharshi Marg
Silpa Park, Kondapur
Hyderaad-500084, India
Contact+ 91-40-27115585